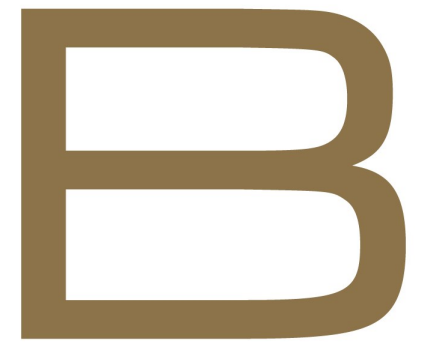




*Carriage House, Randolph Avenue, London, W9  
1BG*



BRAITHWAIT



2 x  1 x  1 x 

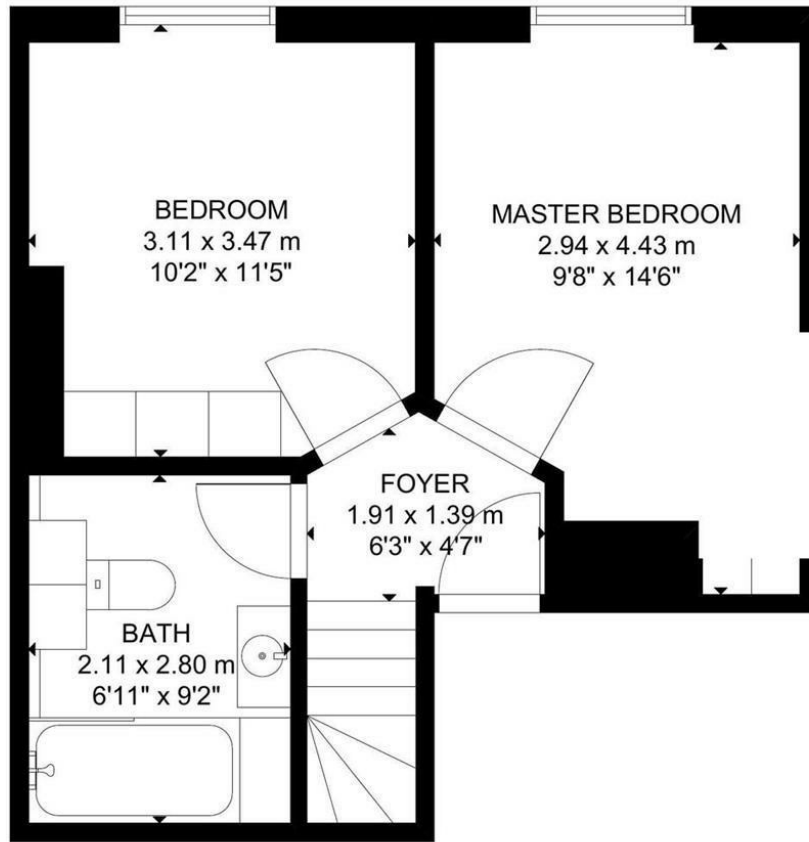
\*\*Available 1st of July\*

Braithwait presents a beautifully presented, two bedroom, split level apartment situated on the third floor (with lift) of this stucco fronted building on the borders of Maida Vale and Little Venice. The flat benefits from a lift to the top floor.

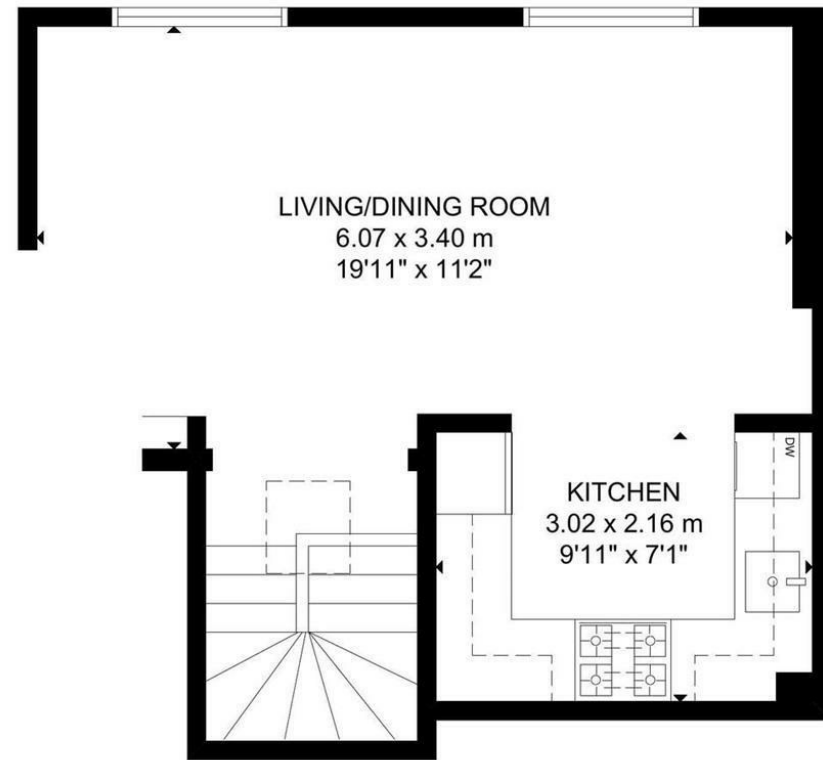
The property has been recently redecorated throughout and consists of a large entrance hall leading to a spacious and bright reception with dining area, contemporary kitchen, two double bedrooms with ample storage.

The property is located within walking distance of the canal ways of Little Venice and all local amenities of Maida Vale. Warwick Avenue and Maida Vale underground stations provide excellent transport links to the City and West End.





THIRD FLOOR



FOURTH FLOOR

GROSS INTERNAL AREA  
 TOTAL: 66 m<sup>2</sup>/707 sq ft  
 SECOND FLOOR: 34 m<sup>2</sup>/367 sq ft, THIRD FLOOR: 32 m<sup>2</sup>/340 sq ft  
 SIZE AND DIMENSIONS ARE APPROXIMATE, ACTUAL MAY VARY.

**Important Notice** Debussy Property Service Ltd trading as Braithwait for themselves and for the vendor of this property whose agents they are, give notice that (i) these particulars do not constitute any part of an offer or contract, (ii) all statements contained within these particulars are made without responsibility on the part of Braithwait or the vendor, (iii) whilst none in good faith, none of the statements contained within these particulars are to be relied upon as a statement of representation or fact, (iv) any intending purchaser must satisfy him/herself by inspection or otherwise as to the correctness of each of the statements contained within these particulars, (v) the vendor does not make or give either Braithwait or any person within their employment any authority to make or give any representation or warranty whatsoever in relation to this property. Wide angled lenses may be used in photographs.

Call us on 0207 289 8889 or email [sales@braithwait.co.uk](mailto:sales@braithwait.co.uk)

